



Computing Services Centre
香港城市大學
City University of Hong Kong

USER GUIDE FOR **USING AV EQUIPMENT**

Lau Ming Wai Academic Building

5/F & 6/F Classrooms (Single Projection)

For IT or AV support, please contact the CSC Service Desk at **3442-8340**

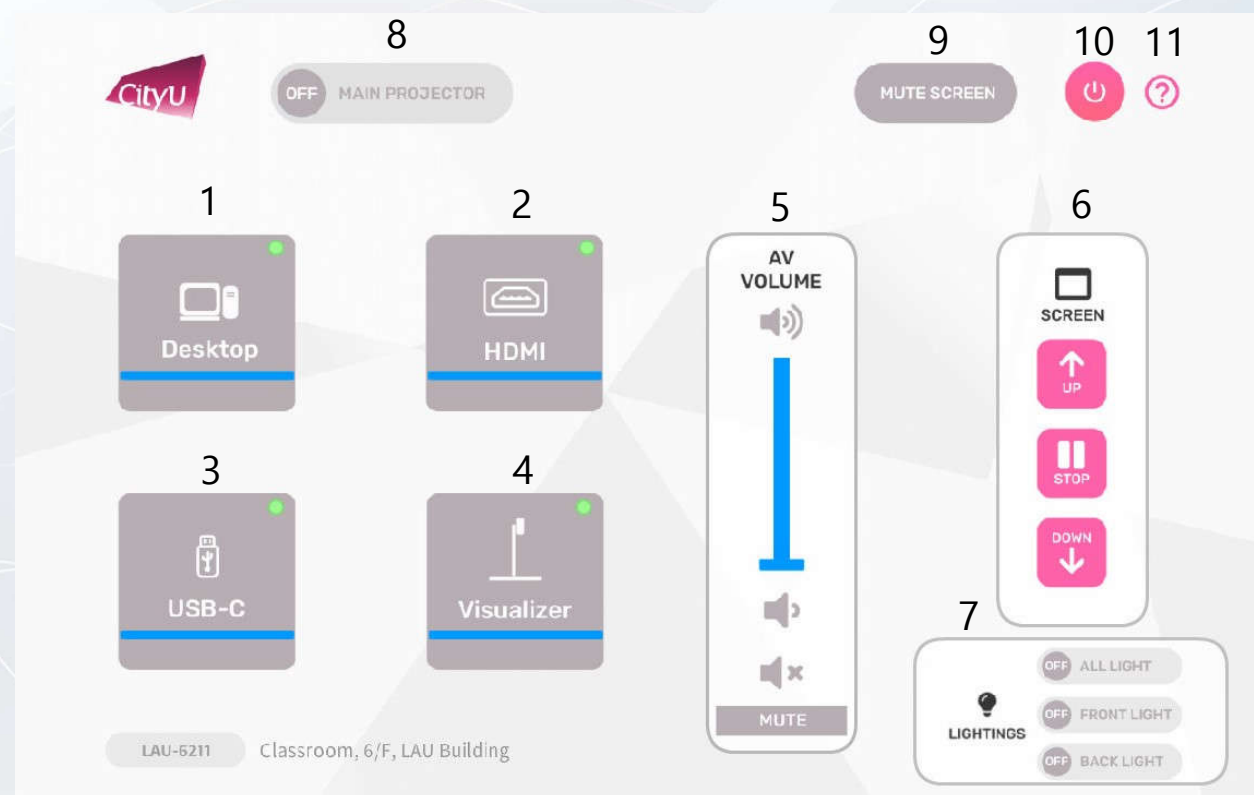
AV Control Panel

Display Source Select

1. Desktop Computer
2. HDMI Input (Use HDMI devices)
3. USB-C Input (Use USB-C devices)
4. Presentation for Visualizer

Other Control

5. Volume Control
6. Screen Control (Up/Stop/Down)
7. Lighting Control
8. Projector (On/Off)
9. Mute Projector
10. System Off
11. Help information



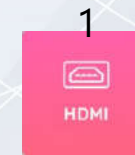
Operation procedure of the Desktop Input

1. Press "Desktop " button



Operation procedure of the HDMI Input

1. Press "HDMI " button
2. Connect the device to HDMI cable



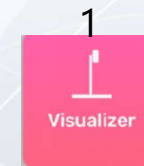
Operation procedure of the USB-C Input

1. Press "USB-C" button
2. Connect the device to USB-C cable



Operation procedure of Visualizer Input

1. Press "Visualizer" button



System OFF

1. Confirm Power off
2. Cancel Power off

